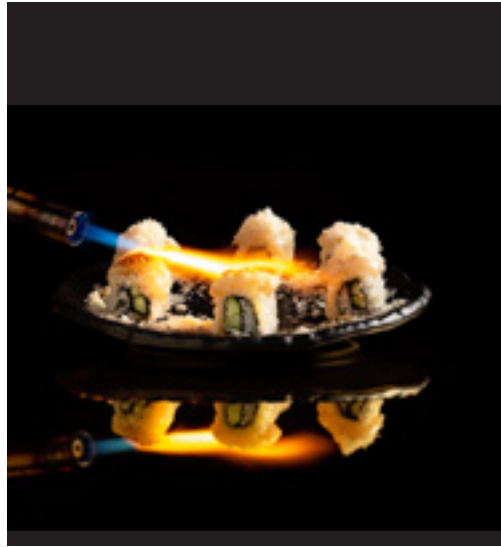
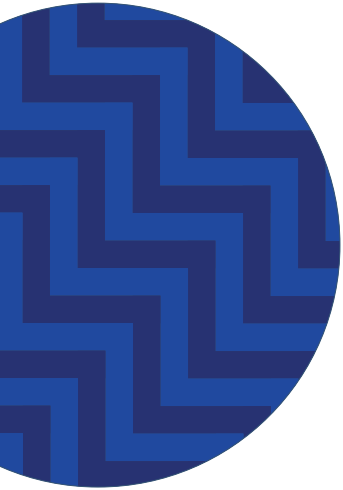


ΤΟΚΥΟΛΙΜΑ

EVENTS KIT



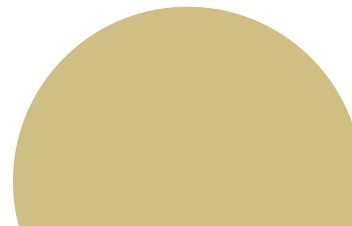


ABOUT

TokyoLima is a late-night restaurant and bar serving Nikkei cuisine in the atmosphere of a buzzing izakaya*. Tucked away on Lyndhurst Terrace, TokyoLima invites you to escape and lose track of time with great drinks, food and company. Stop by for a lesson in sake, a relaxed bite at our open kitchen counter or let chef Arturo surprise you with his 'Feed Me' Tasting Menu.

WHY TOKYOLIMA

TokyoLima is an engaging space perfect for celebrating special occasions. With a private dining room ideally suited for parties up to 15 people, as well as semi private area for parties below 30 people, this is a space with many different niches carved out for every occasion.





FLOORPLAN

CAPACITY

PRIVATE SPACE

Seated / 30 ppl

Standing / 50 ppl

RESTAURANT

Seated / 100 ppl

(tables & counters)

Standing / 150 ppl

Total Seating Capacity

Seated / 134 ppl

(table, sofa & counters)

Standing / 190 ppl

..... PRIVATE ROOM

—— SEMIPRIVATE ROOM

==== BAR AREA

